

# Maitri Campus

Maitri School / Building (2024)  
慈明学校 / 慈明聚缘阁(2024)



## 【Creating an inclusive community, with you and me】 【创造包容性社会，从您开始】

An inclusive community values all its members and helps to meet their basic needs so that they can live with dignity, engage actively and contribute to the community strengthening the social connectedness and belonging. Their future is created by what you do today.

Felicia Wee  
Deputy Executive Director  
Metta Welfare Association

包容性社区重视所有成员并帮助满足他们的基本需求，以便他们能够有尊严地生活、积极参与并为社区做出贡献。加强社会联系和归属感。他们的未来是由你今天所做的创造的。

黄淑萍  
副执行董事  
慈光福利协会





# Location of new campus 新校舍地址

The new building will be located at 20 Pasir Ris Street 51, Singapore 518902. The proposed development will be situated close to Meridian Secondary School, and is minutes away from other amenities like Pasir Ris Town Park, White Sand Shopping Mall, Pasir Ris MRT and Pasir Ris Bus interchange.

慈明学校、慈明聚缘阁新设施位于二十号巴西立五十一街 并将在2024年完工。新校舍位于美廉中学附近，并且靠近其他景点与设施如巴西立城镇公园，白沙购物中心，巴西立地铁站，巴西立巴士转换站。

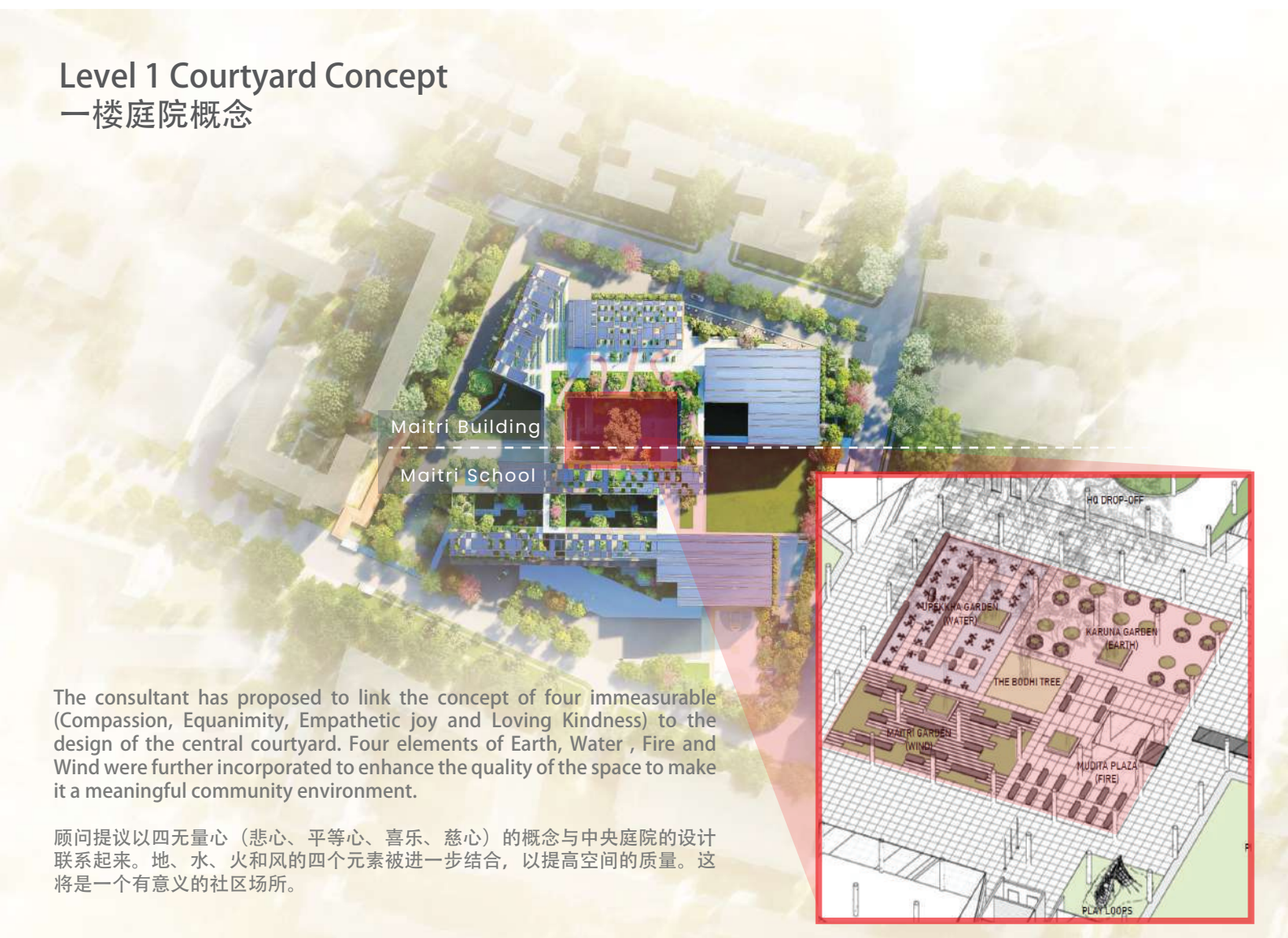


Scan to view visual and animation video  
扫描此QR码观看视觉和动画视频

\*Artist impression only, actual development may defer



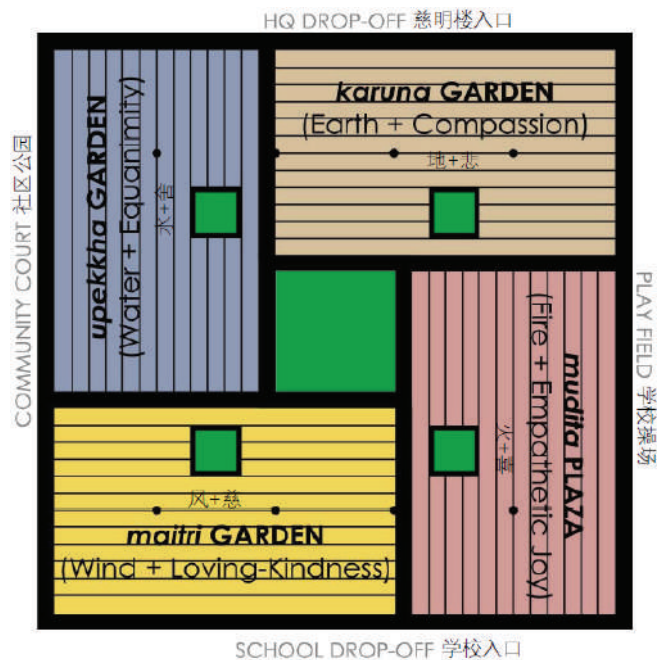
# Level 1 Courtyard Concept 一楼庭院概念



The consultant has proposed to link the concept of four immeasurable (Compassion, Equanimity, Empathetic joy and Loving Kindness) to the design of the central courtyard. Four elements of Earth, Water, Fire and Wind were further incorporated to enhance the quality of the space to make it a meaningful community environment.

顾问提议以四无量心（悲心、平等心、喜乐、慈心）的概念与中央庭院的设计联系起来。地、水、火和风的四个元素被进一步结合，以提高空间的质量。这将是一个有意义的社区场所。

<p><b>Earth</b> + <i>karunā</i> /Compassion 地+悲</p>	<p>Knowing that we are interconnected, I open my heart to the suffering of others.</p> <p>In the rich, dark soil of compassion, I nurture deep roots of solidarity, finding those tender, alive places where our struggles interweave.</p> <p>From rootedness, I grow toward peace, justice, and collective liberation.</p> 
<p><b>Water</b> + <i>upekkhā</i> /Equanimity 水+舍</p>	<p>Flowing in a wide stream of bold, beautiful social movements throughout space and time, I know I am not alone.</p> <p>Seeing the truth of impermanence, I recall that nothing lasts forever.</p> <p>From this place of balance, I use my gifts to take action for what I believe is right.</p> 
<p><b>Fire</b> + <i>muditā</i> /Empathetic Joy 火+喜</p>	<p>I notice and delight in the happiness of others: from the beaming smile of a child, to youth and elders rising up, incandescent, for Black lives, gender justice, immigrant rights, queer love, sacred Earth, and more.</p> <p>I shine brightest when others shine, too.</p> 
<p><b>Wind</b> + <i>maitrī/mettā</i> /Loving- Kindness 风+慈</p>	<p>I send goodwill everywhere on the winds: to myself, my loved ones, community, and maybe even my enemies, while compassionately confronting oppression with all my heart.</p> <p>May the winds of loving-kindness fill my sails as I work to better this world.</p> 

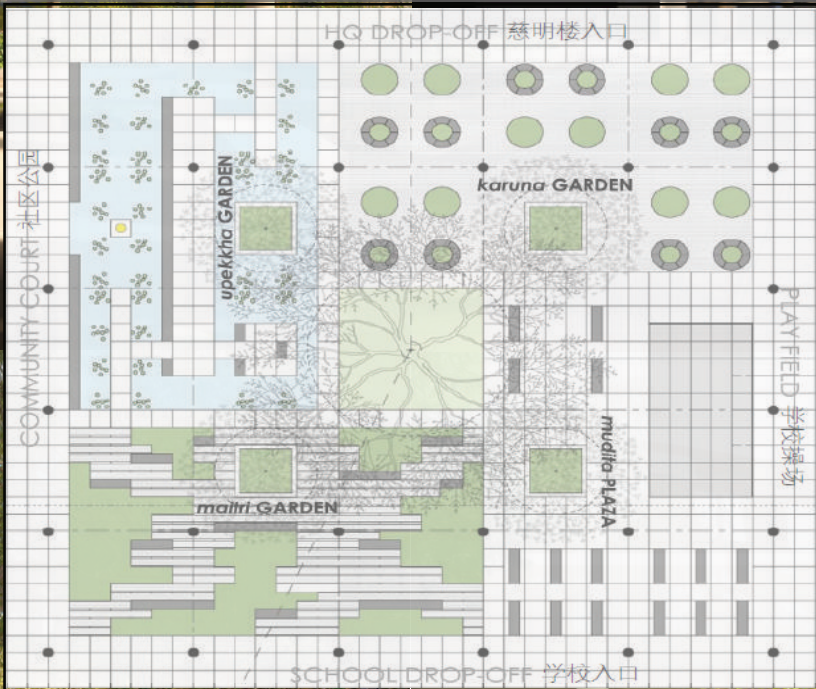






Upekkha Garden  
水 + 舍

Karuna Garden  
地 + 悲



Maitri Garden  
风 + 慈

Mudita Garden  
火 + 喜



# Time to Explore

## 探索时间



A sensory wall is a space on a wall that provides tactile (touch) sensory input to children's fingers and hands. The wall allows children to explore their senses and discover the world around them. It helps ensure their bodies get the input they need, which can improve their attention and readiness to learn throughout the day.

感官墙是墙上的空间，为儿童的手指和手提供触觉（触摸）感官输入。墙壁让孩子们探索他们的感官并发现他们周围的世界。它有助于确保他们的身体获得所需的输入，从而提高他们全天的注意力和学习准备。



Our staff make use of the corridor spaces outside the classrooms to create sensory walls. The children love the opportunities for rich sensory exploration. The sensory walls give tactile, visual and auditory sensory input. It is so inviting for students (and adults as well), to explore and discover more about their own sensory preferences.

我们的员工利用教室外的走廊空间来打造感官墙。孩子们喜欢丰富的感官探索机会。感官壁提供触觉、视觉和听觉感官输入。它非常吸引学生（以及成年人）去探索和发现更多关于他们自己的感官偏好。

Thank you staff for creating wonderful experiences for our students.  
感谢教员工为我们的学生创造美妙的体验。

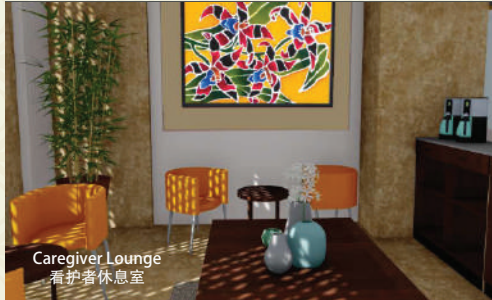


WE NEED YOUR SUPPORT...

我们需要您的支持。。



Computer Lab  
电脑室



Caregiver Lounge  
看护者休息室



Resource Library  
图书馆



Maitri Cafe  
慈明聚缘轩



Alumni Performing Arts Studio  
校友表演艺术室



Arts Gallery  
艺术画廊

\*Artist impression only, actual development may defer

Donate to build a Strong Foundation in Life Long Learning for our students and youth.

The Maitri Campus will provide a continuum of services for the students and alumni after they graduate from school. We strive to provide:

- Continuous education that will enable our students with moderate to severe disabilities to play an active and responsible role in society.
- Re-training and Re-skilling in the age of automation
- Provide employment opportunities
- Foster Independent living to help Persons with Disabilities (PwDs) integrate into the community
- Better support for their caregivers.

We need your support! For room adoption and customised sponsorship options, please contact us at [maitri@metta.org.sg](mailto:maitri@metta.org.sg) or call us at 65804628. All donations will be eligible to receive tax exemption.

捐助为我们的学生和青年建立终身学习的坚实基础。  
慈明村将为学生和校友从学校毕业后提供连续的服务。我们努力提供;

- 继续教育将使我们的中度至重度残疾学生能够在社会中发挥积极和负责任的作用。
- 自动化时代的再培训和再技能
- 提供就业机会
- 培养独立生活，以帮助残疾人士融入社会
- 为其看护者提供更好的支持。

我们需要您的支持！预知更多捐助慈明学校/慈明聚缘阁设施，请电邮至[maitri@metta.org.sg](mailto:maitri@metta.org.sg)与我们联系，或在办公时间拨电65804628与我们联系。所有捐款都将获得免税。



Payment mode  
Visit Metta Welfare Association website by scanning the QR code above to view the various payment mode.

付款方式  
通过扫描上方的QR码浏览慈光福利协会官方网站，以查看各种付款方式。



METTA WELFARE ASSOCIATION  
UEN:S945S0081K  
UEN/Bill Reference No:  
Maitri School/Building Donation

PayNow  
Kindly attached a screenshot of the confirmation and email to [maitri@metta.org.sg](mailto:maitri@metta.org.sg). Please also include your address and NRIC (for tax exemption purpose) in your email. We will mail the receipt to you.

请将交易成功屏幕截图并同您的地址和身份证（用于退税用途）电邮至[maitri@metta.org.sg](mailto:maitri@metta.org.sg)。我们将收据邮寄给您。



@Metta Welfare Association



MettaWelfareAssociation



[www.metta.org.sg](http://www.metta.org.sg)



[maitri@metta.org.sg](mailto:maitri@metta.org.sg)