



Warm Welcome

Maitri School Talk & Tour for Prospective Parents

Agenda

- School Overview
- Curriculum Overview
- School Application & Other Information
- New School Building in 2028
- Q&A
- School Tour (1 hour)



Maitri School

School Overview



METTA WELFARE ASSOCIATION

Our Beginning



We had our beginnings as Maitri Programme residing in Metta School, started by Metta Welfare Association in 2021.

We are officially registered as a school in Dec 2023, moving into the current Eunos holding site.

For 2026, we have M1 – M6 cohorts.



Maitri School

- Maitri means “Loving Kindness” in Sanskrit
- We offer a customized curriculum to ASD-ID students [Autism Spectrum Disorder with Intellectual Disability]
- We accept students of all races or religions, with priority given to Singapore Citizens.



Maitri School

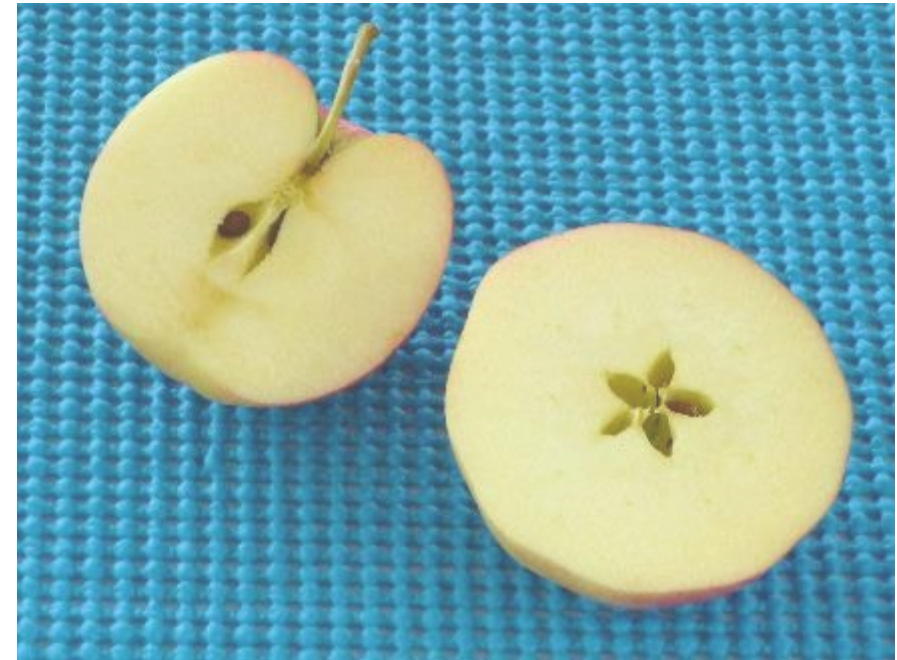
- Students aged between 7 to 18 years old
- Total school capacity of 348 places
- Default teacher-to-student ratio is 1:5

Our Belief

We believe that all children on the autism spectrum are unique, and their needs are different from one another.

They have unique talents as well.

We believe that all children can learn, we design our programmes and interventions to equip them with the necessary knowledge, skills and attributes; so that they are empowered to take care of themselves.



Every Apple has a Star. ●

There is a Star in Every Child

School Vision and Mission

School Vision

Maximising Potential | Transforming Lives

School Mission

We empower students to live better, learn continually, and contribute meaningfully.

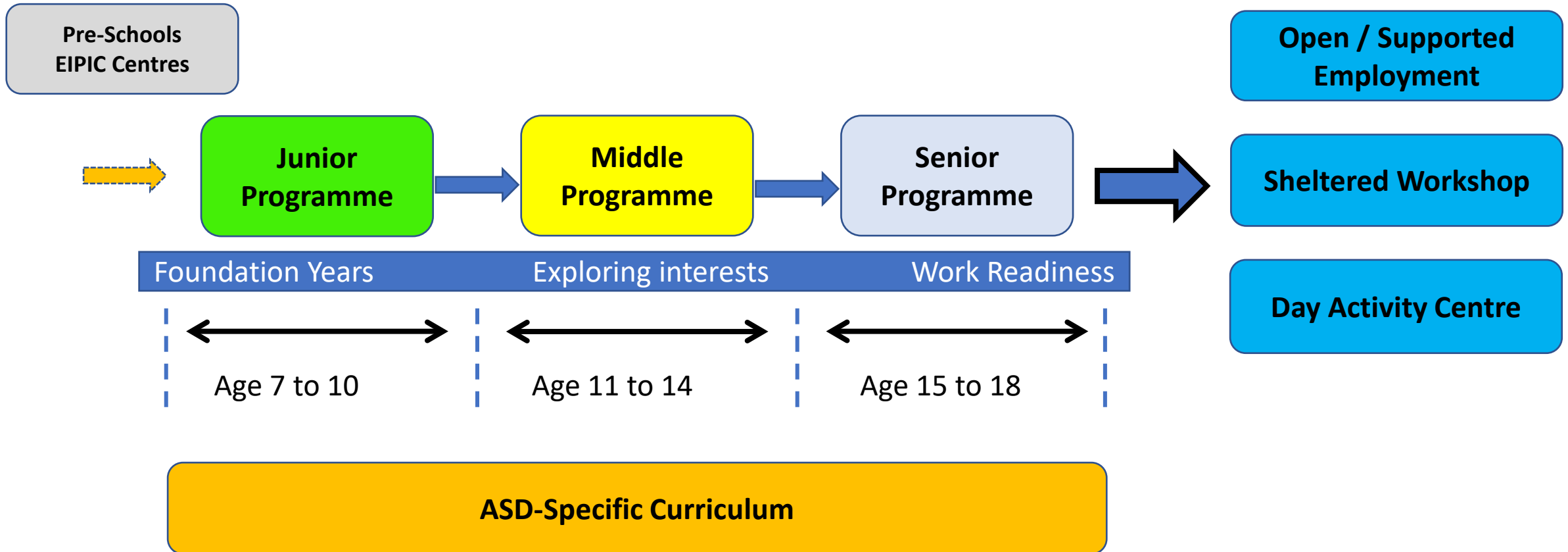
School Philosophy

There is a Star in every child

(All children can learn. All are unique, with different needs and talents.)



Maitri School Educational Pathways



Maitri School

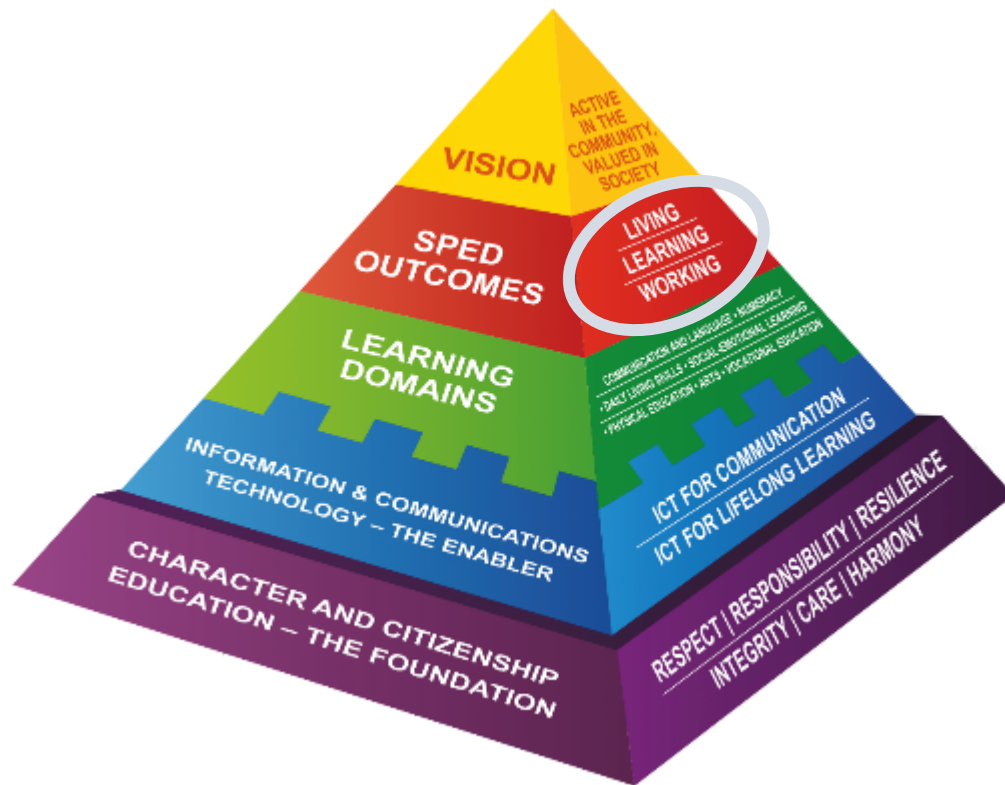
Curriculum Overview



慈光福利协会

METTA WELFARE ASSOCIATION

Aligned to SPED Curriculum Framework



Education Outcomes:

- Living (L)
- Learning (L)
- Working (W)

School Mission

We empower students to live better, learn continually, and contribute meaningfully.

Maitri School Desired Student Outcomes

7 yo

10 yo

**Junior
Level 1-4**

Build knowledge and skills in

- Communicating needs
- Regulating and managing emotions
- Increasing learning readiness
- Increasing self-care

11 yo

14 yo

**Middle
Level 5-8**

Build engagement and motivation by

- Increasing self-determination skills
- Discovering interests and strengths
- Exploring the wider community

15 yo

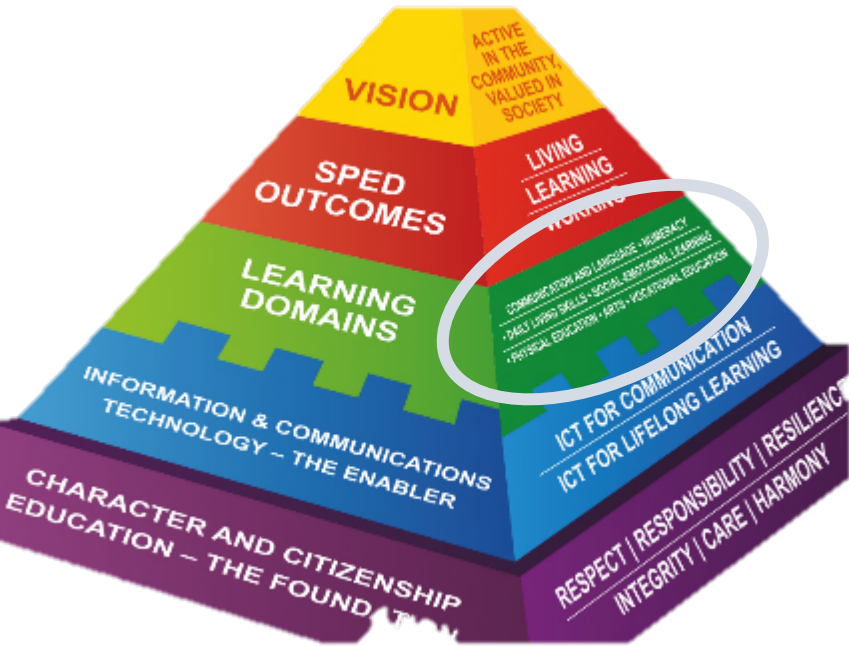
18 yo

**Senior
Level 9-12**

Increase life and work readiness by

- Preparing post-school pathway
- Integrating with Community
- Mastering hard and soft skills

Learning Domains



Learning Domains	Subjects
Social-Emotional Learning	01 Social-Emotional Learning (<i>SEL</i>)
Communication and Language Numeracy	02 Communication (<i>Comm</i>) 03 Functional Literacy (<i>Lit</i>) 04 Functional Numeracy (<i>Num</i>)
Daily Living Skills	05 Personal Management (<i>PM</i>) 06 Home Living (<i>HL</i>) 07 Home Economics (<i>HE</i>)
Physical Education	08 Adapted PE (<i>APE</i>)
Arts	09 Performing Arts (<i>PA</i>) for M1 & M2 / Co-curricular Activity (<i>CCA</i>) from M3 10 Visual Arts (<i>VA</i>)
Vocational Education	11 Pre-Vocational (<i>PV</i>) – Middle Prog

Timetable

Sample copy

PM	1235-1245	1245-1300	1300-1330	1330-1400	1400-1430	1430-1500	1500-1530	1530-1600	1600-1630	1630-1700	1700-1730
AM	0720-0730	0730-0745	0745-0815	0815-0845	0845-0915	0915-0945	0945-1015	1015-1045	1045-1115	1115-1145	1145-1215
Mon	Student arrival	Assembly / Arrival routines	Social-emotional Learning	Numeracy	Recess	Functional Literacy	Communication				
Tue			Social-emotional Learning	Numeracy		Adapted Physical Ed.	Personal Management				
Wed			Music and Movement	Literacy		Social-emotional Learning	Communication				
Thu			Home Living	Numeracy		Adapted Physical Ed.	Personal Management				
Fri			Home Economics	Literacy		Visual Arts	Social-emotional Learning/ Personal Management				

- Drop-off at 7:20am-7:30am and 12:35pm-12:45pm for AM and PM session, respectively

Support and Intervention Structures

I. Strategies and tools for teaching and learning



Assistive technology



Authentic environments



Hands-on materials

Support and Intervention Structures

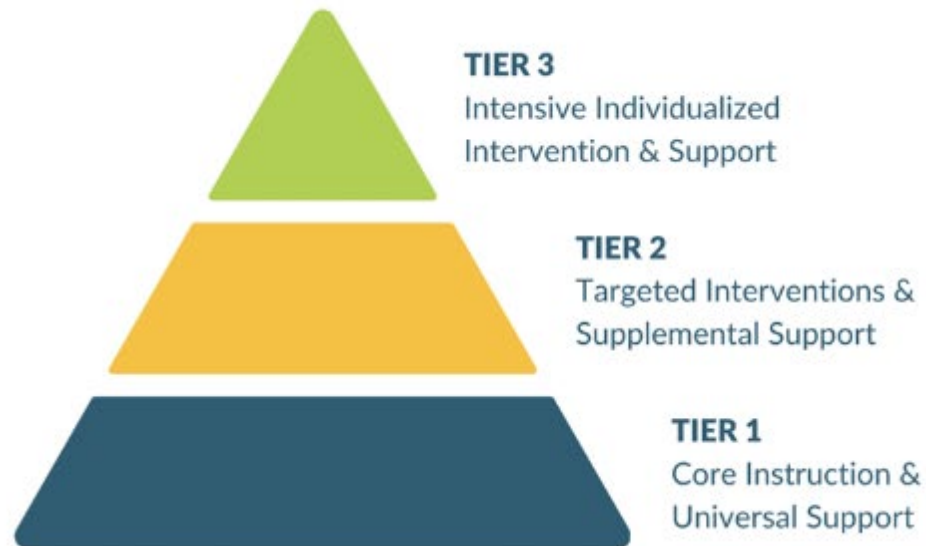
2. Individual Planning



All students have Individual Education Plan and Individual Transition Plan when they reach their senior years

Support and Intervention Structures

3. Tiered Approach to Intervention



Promote collaboration between teachers and AHPs to ensure all students receive timely support tailored to their needs

Maitri School

School Application & Other Information



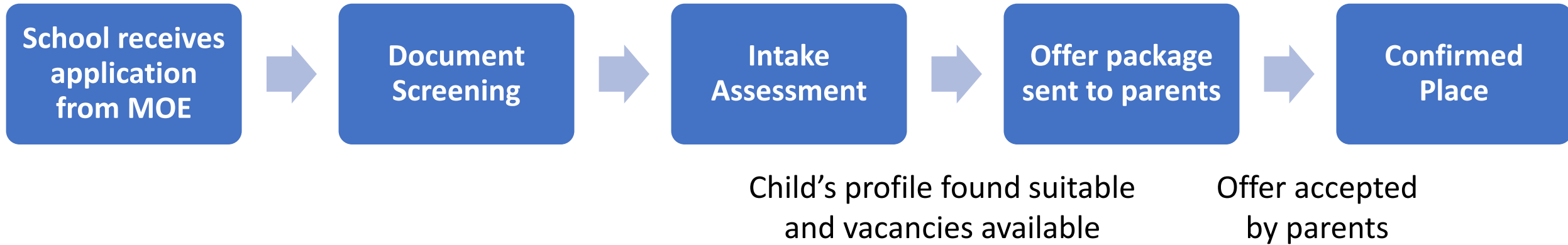
METTA WELFARE ASSOCIATION

Maitri School: ASD with intellectual impairment

MOE Website shows the schools that support the child's primary diagnosed condition:

- Autism spectrum disorder (ASD) with no intellectual impairment
- Autism spectrum disorder (ASD) with intellectual impairment
- Mild intellectual disability (MID)
- Moderate to severe intellectual disability (MSID)
- Multiple disabilities (MD)
- Sensory impairment

Application (for children born in year 2020)



Important Information

1. Admissions Criteria:

- Formal diagnosis of ASD
- No significant medical conditions that will affect ability to access the curriculum. These include physical disabilities such as visual or hearing impairment.

2. Application window for entry in 2027 : 2 February 2026 to 22 May 2026.

3. Parent Orientation for confirmed places - 1 month prior to start of school

Delayed Placement for 2027 M1 cohort

- Next M1 intake will be in Term 2, 2027 (22 March 2027)
- If child is successful and offered a place for 2027,
 - Do use the offer letter from the school to request for extension in your child's EIPIC.
 - This letter will be evidence that parents have complied with the Compulsory Education Act (2000)
- At the moment, the school does not have any vacancies for students born in 2019 and earlier.

Monthly School Fees Rate

	From January 2027
Singapore Citizen	\$80
Singapore PR	\$280

2026 School Bus Rate - \$320 to \$500

Main locations covered:

- Tampines & Simei
- Pasir Ris
- Punggol (including Sumang)
- Sengkang (including Fernvale)

**Financial assistance
available for needy
Singaporean citizen
families**

Useful resources

- Maitri School Website
 - <https://maitrischool.edu.sg/>
- Post-18 Interactive Guide (SG-Enable)
 - <https://www.enablingguide.sg/disability-info/life-stages-transitions/post-18-interactive-guide/interactive>



School Facilities at Holding Site

- Autism-friendly classrooms
- Occupational Therapy Room
- Daily Living Skills Room
- Home Economics Rooms
- Maitri Express (Decommissioned Bus)
- PE facilities – Indoor Hall and Bouldering Wall



Maitri Campus 慈明村

Estimated
Operational Date:
Jan 2028

*Please note that the pictures of the Maitri School/
Building Project are artist impressions, and subject to
change. They are for project illustration purposes.*















20 Pasir Ris Street 51, Singapore 518902



Maitri School

Q&A



慈光福利协会

METTA WELFARE ASSOCIATION

Thank you

